





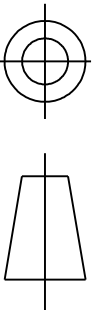
**Nameplate Specifications**

Output HP	0.50 Hp	Output KW	0.37 kW
Frequency	60 Hz	Voltage	115/230 V
Current	8.6,4.3 A	Speed	1725 rpm
Service Factor	1.15	Phase	1
Efficiency	64.9 %	Power Factor	0
Duty	Continuous	Insulation Class	B
KVA Code	M	Frame	56
Enclosure	Totally Enclosed Fan Cooled	Thermal Protection	AUTO
Ambient Temperature	40 °C	Drive End Bearing Size	6203
Opp Drive End Bearing Size	6203	UL	Recognized
CSA	Yes	CE	N

**Technical Specifications**

Electrical Type	Capacitor Start Induction Run	Starting Method	SM
Poles	4	Rotation	Counterclockwise/Clockwise
Mounting	Rigid Base	Motor Orientation	ANY
Drive End Bearing	BALL	Opp Drive End Bearing	Ball
Frame Material	Rolled Steel	Overall Length	11 in
Frame Length	5.72 in	Shaft Diameter	0.630 in
Shaft Extension	1.88 in		
Connection Drawing	52A105383BA	Outline Drawing	52A107631P1

This is an uncontrolled document once printed or downloaded and is subject to change without notice. Date Created:03/11/2020

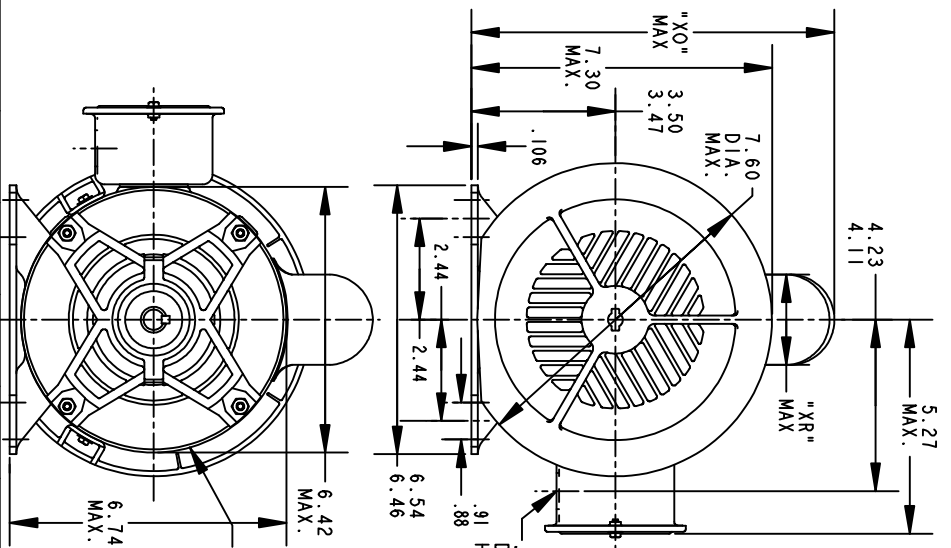


THIRD ANGLE PROJECTION

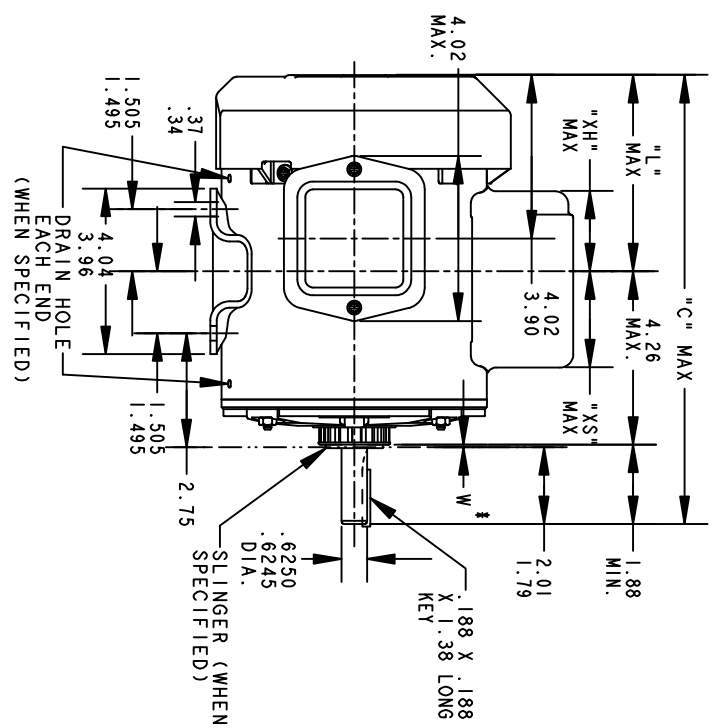
REVISIONS

REV.	DESCRIPTION	DATE	APPROVED
16	AADED PT# 9 PER DSI0-0516	05/07/10	PRAVEEN.K

REV 15  
 SHEET 1  
 52A107631  
 DRAWING NO. A  
 SIZE A



VIEW OF P. E.  
 END SHIELD



ALL DIMENSIONS ARE IN INCHES

\*W IS A VARIABLE CLEARANCE DUE TO VARIATIONS IN PARTS AND ASSEMBLY

P	TYPE	GE SIZE	NEMA FR.	"C"	"L"	"XH"	"XO"	"XR"	"XS"	MIN. SHELL
9	KC	49	56	12.96	6.81	3.58	8.24	1.60	2.17	7.68
8	KC	48	56	13.71	6.05	4.33	8.26	2.40	2.92	8.43
7	KC	49	56	11.43	5.28	2.00	8.26	1.60	2.48	6.15
6	KC	49	56	12.43	6.28	3.51	8.22	1.60	2.24	7.15
5	KC	49	56	12.43	6.28	3.51	8.94	2.40	2.24	7.15
4	KC	49	56	12.96	6.81	3.58	8.94	2.40	2.17	7.68
3	KC	46	56	11.83	5.68	2.91	8.94	2.40	2.84	6.55
2	KC	46	56	11.83	5.68	2.91	8.84	2.22	1.63	6.55
1	KC	42	56	11.00	4.85	2.08	8.84	2.22	2.46	5.72

**REGAL-BELOIT CORPORATION**

**OUTLINE**

TITLE  
**GENERAL PURPOSE MOTOR TEFC - BALL BEARING - WELDED BASE FWF - 40 FRAME REDESIGN**

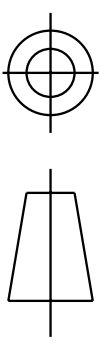
SIZE DRAWING  
**A**

SCALE: 0.250 REF. No. .

52A107631  
 REV 15

SIGNATURES	DATE
MODEL M.D. PAPE	10/23/90
DETAIL	
CHECKED	
ENGRG	
WF6	
FOR ADDITIONAL INFO REFER TO:	
APPLIED PRACTICES	QUALITY
DIMENSIONS ARE IN INCHES	ISSUED
MATERIAL	SOLID MODEL: 52A107631

QUALITY	DATE
M.D. PAPE	04/27/94

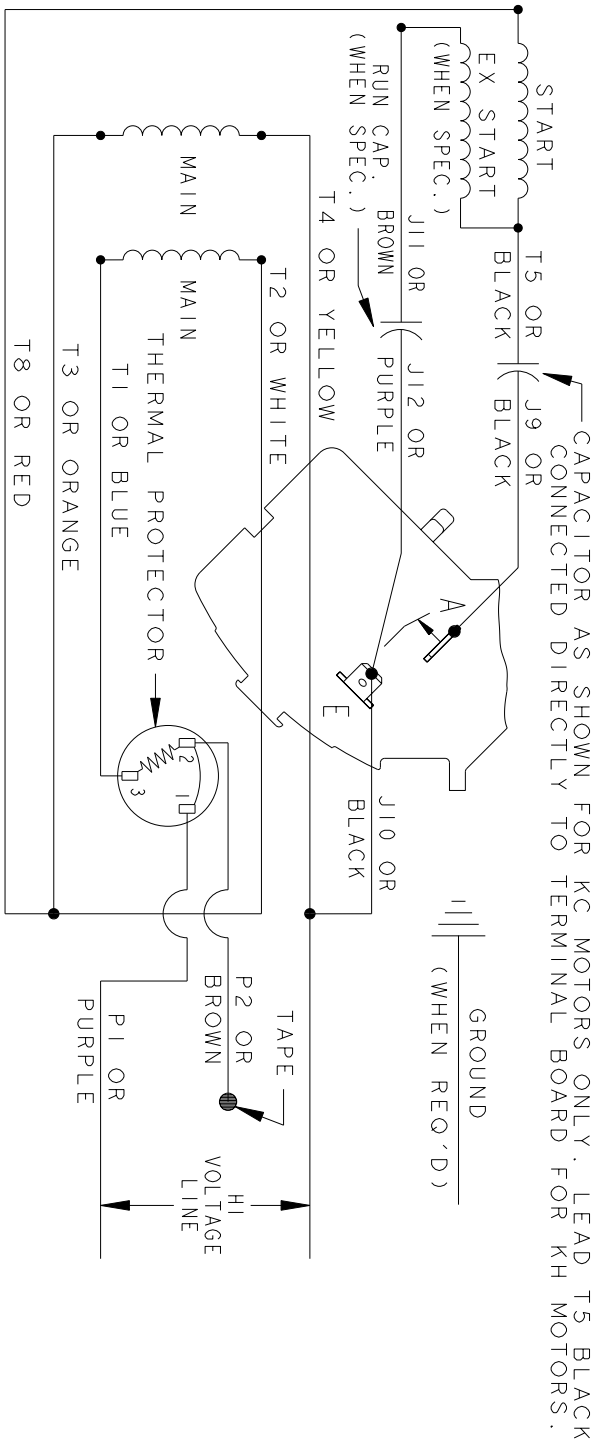
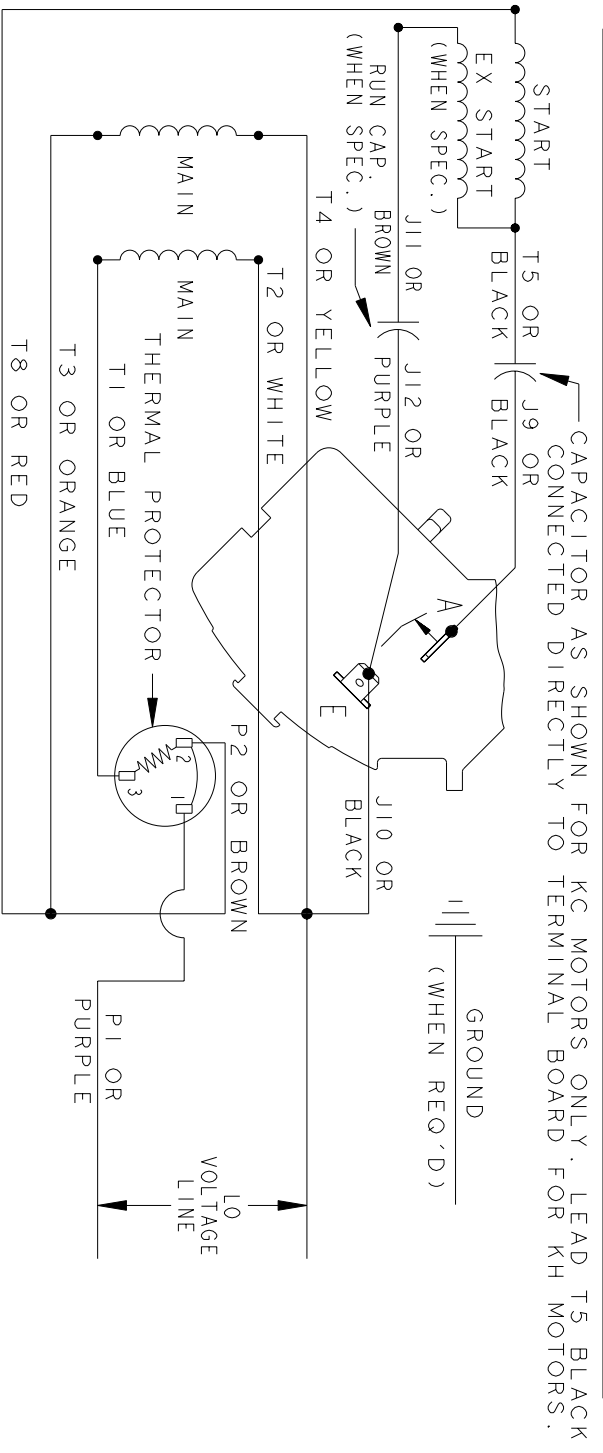


THIRD ANGLE PROJECTION

REVISIONS

REV.	DESCRIPTION	DATE	APPROVED
7	UPDATED FORMAT	01/05/06	MAM

CCW/CW ROTATION - DUAL VOLTAGE  
 TYPE KC, KH OR KCR - WITH THERMAL PROTECTOR



NOTE#1 - TO REVERSE ROTATION, INTERCHANGE T8 RED AND J10 BLACK LEADS.  
 NOTE#2 - WHEN MORE THAN ONE CAPACITOR IS USED, CONNECT IN PARALLEL.  
 NOTE#3 - 115D958ABP5 - HIGH CURRENT CONTACTS.

SWITCH (C) - 115D958ABP5, SWITCH (H) - 115D958AA (USE 115D958DA FOR EP)

REF. DIAG. - 113A327, 119A9352 & 52A102102 CONNECTION LABEL - 52X332912

SIGNATURES		DATE
MODEL	M.D.P.	06/29/87
DETAIL		
CHECKED		
ENGRG		
MFG		
QUALITY		
ISSUED	M.D.P.	12/11/97
APPLIED PRACTICES		
DIMENSIONS ARE IN INCHES		
MATERIAL	SOLID MODEL: 52A105383BA	



REGAL-BELOLT CORPORATION

TITLE CONNECTION DIAGRAM

FME: 30 FRAME SWITCH REDESIGN

52A105383BA

SCALE: 1.000 REF. No.: SHEET 1 of 1

**MARATHON ELECTRIC CORPORATION**

TYPICAL PERFORMANCE CURVE for AC MOTOR

Customer

Curve at

230

Volts

HP 0.5

PHASE 1

Model No 5KC42GN0014X

60

HZ

VOLTS 115/230

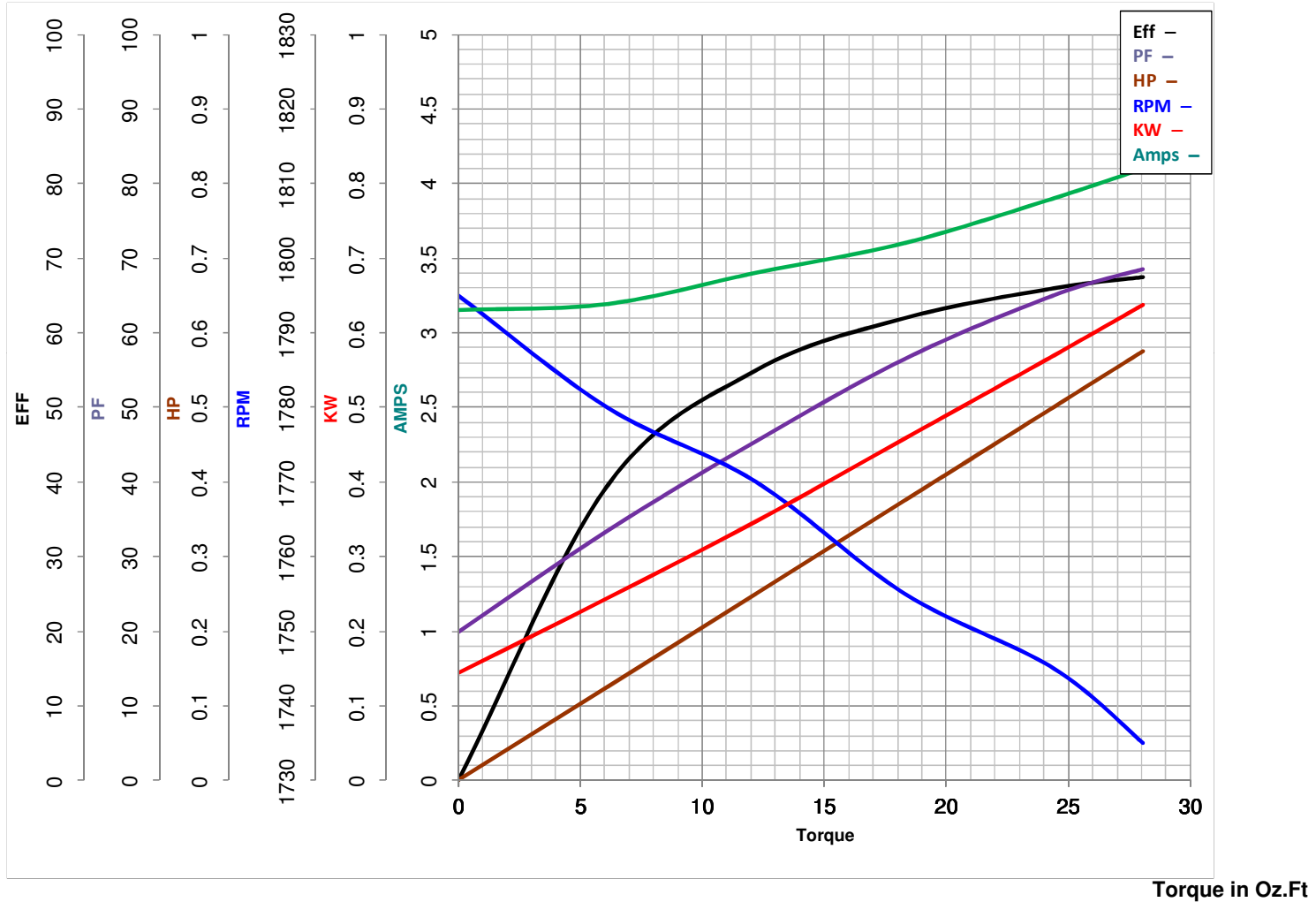
0.5

HP

Catalog No 0

HZ 60

RPM 1725



<b>FL TORQUE</b>	<u>24.4</u>	Oz.Ft	<b>FL AMPS</b>	<u>8.6/4.3</u>	
<b>BD TORQUE</b>	<u>119.9</u>	Oz.Ft	<b>PU TORQUE</b>	<u>68.8</u>	Oz.Ft
<b>LR TORQUE</b>	<u>76.4</u>	Oz.Ft	<b>LR AMPS</b>	<u>21.2</u>	
<b>WINDING</b>	<u>52X330451P1</u>	<b>Prepared By</b>	BHARGAVI	<b>Date</b>	2/27/2018